

wildlight

East Nassau Community Planning Area

Attachment 1

Map Series

October 23, 2023



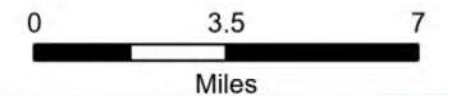
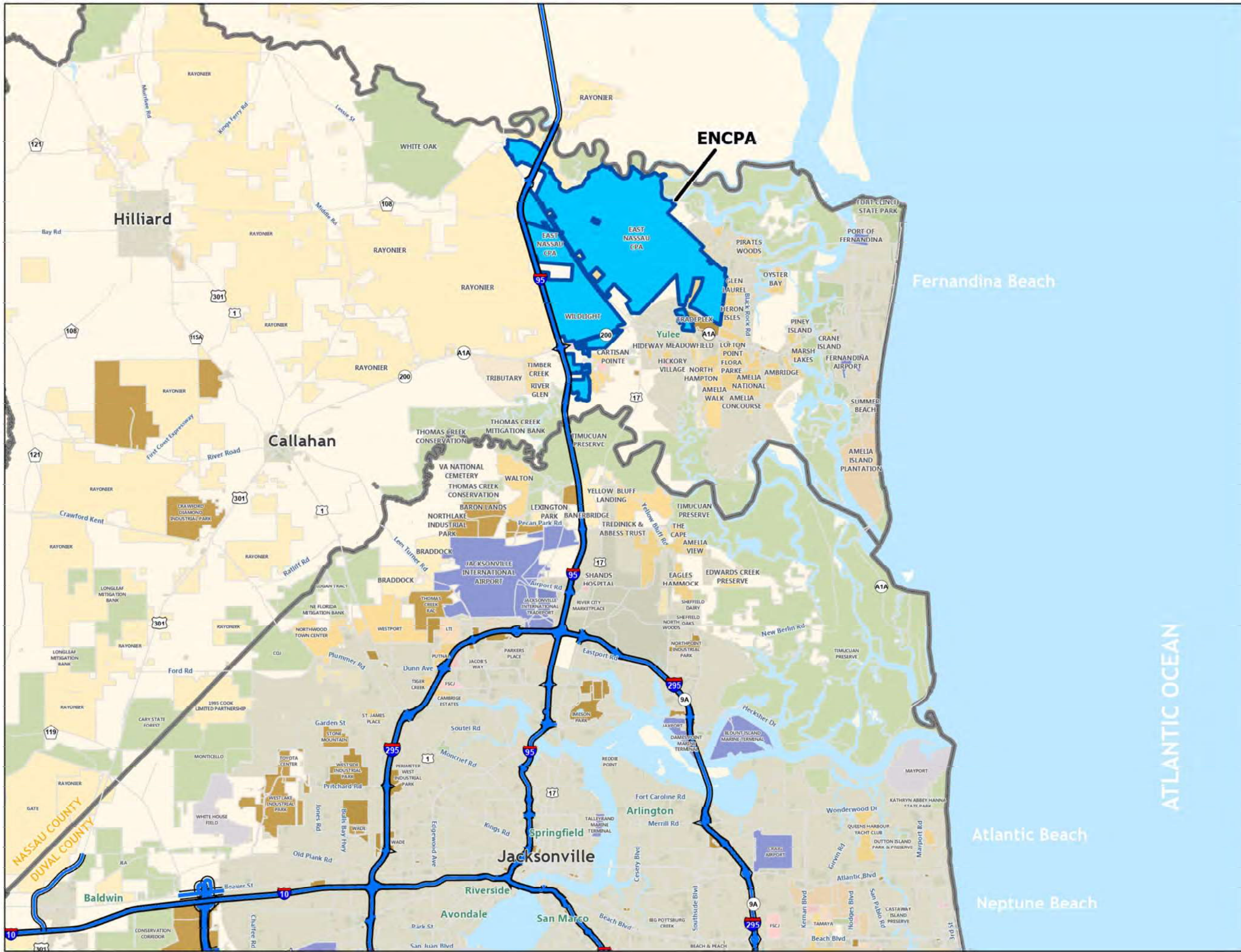
WILDLIGHT

Wildlight - DSAP #2

Location

Source: ETM, Nassau County

-  EAST NASSAU COMMUNITY PLANNING AREA
-  AIRPORT - MARINE PORTS
-  COMMERCIAL DEVELOPMENT
-  DRI /PUD- IN DEVELOPMENT
-  DRI /PUD- NOT DEVELOPED
-  GOVERNMENT FACILITIES
-  INSTITUTIONAL DEVELOPMENT
-  LARGE LAND HOLDING
-  MAJOR COMMUNITY DEVELOPMENT
-  MILITARY
-  PARKS / PRESERVE
-  LIMITED ACCESS ROADS



ETM England-Thim & Miller, Inc.
 VISION • EXPERIENCE • RESULTS
 14775 Old St. Augustine Road Jacksonville, FL 32258
 904-642-8990 • Fax: 904-646-9485 • www.etm-inc.com

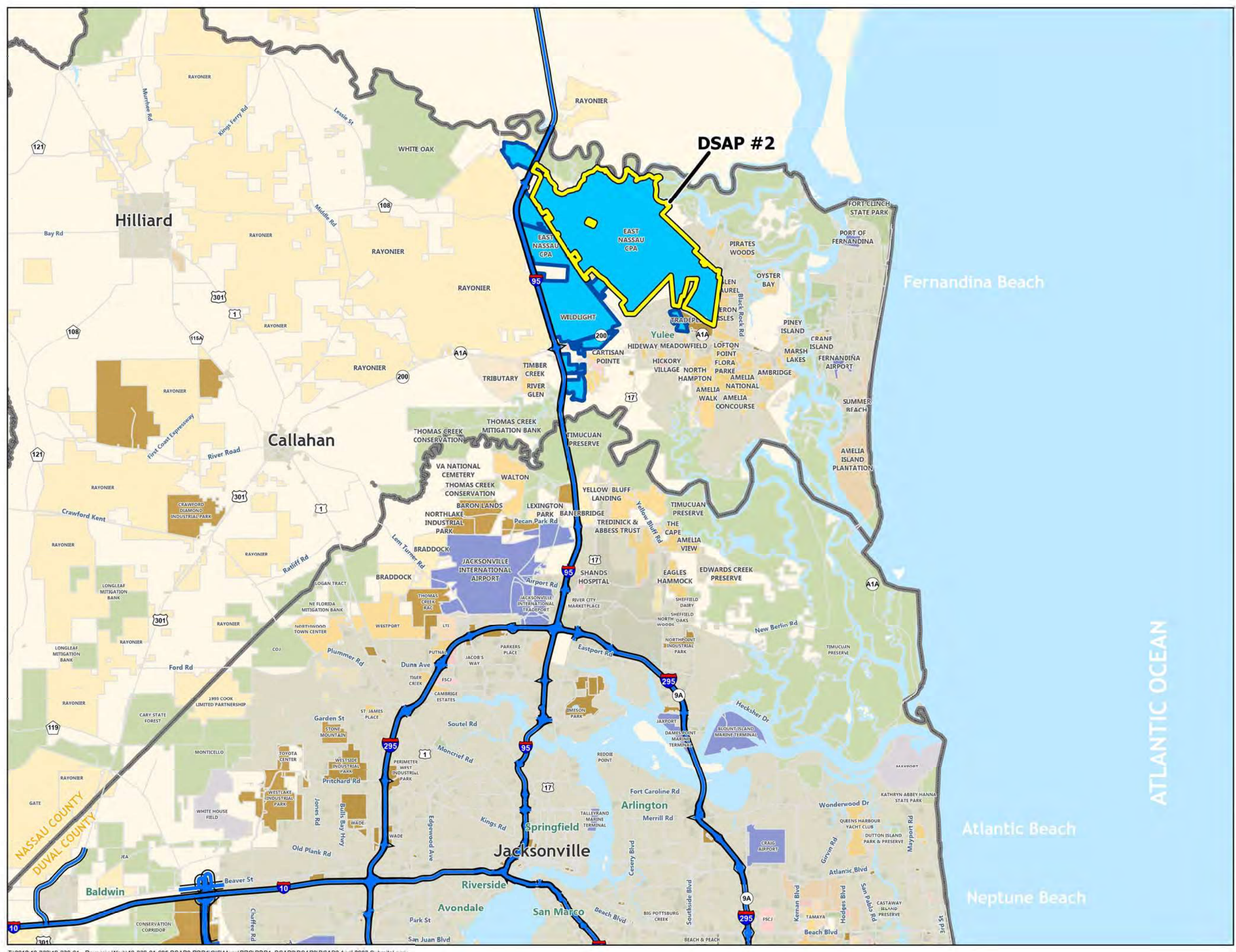
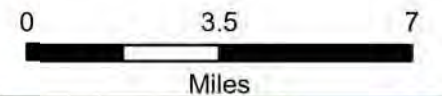
Date: 10/23/2023

Wildlight - DSAP #2

Location

Source: ETM, Nassau County

- DSAP #2 - Area
- EAST NASSAU COMMUNITY PLANNING AREA
- AIRPORT - MARINE PORTS
- COMMERCIAL DEVELOPMENT
- DRI /PUD- IN DEVELOPMENT
- DRI /PUD- NOT DEVELOPED
- GOVERNMENT FACILITIES
- INSTITUTIONAL DEVELOPMENT
- LARGE LAND HOLDING
- MAJOR COMMUNITY DEVELOPMENT
- MILITARY
- PARKS / PRESERVE
- LIMITED ACCESS ROADS

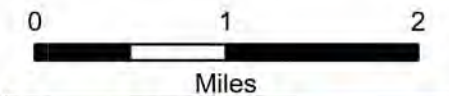


Wildlight - DSAP #2

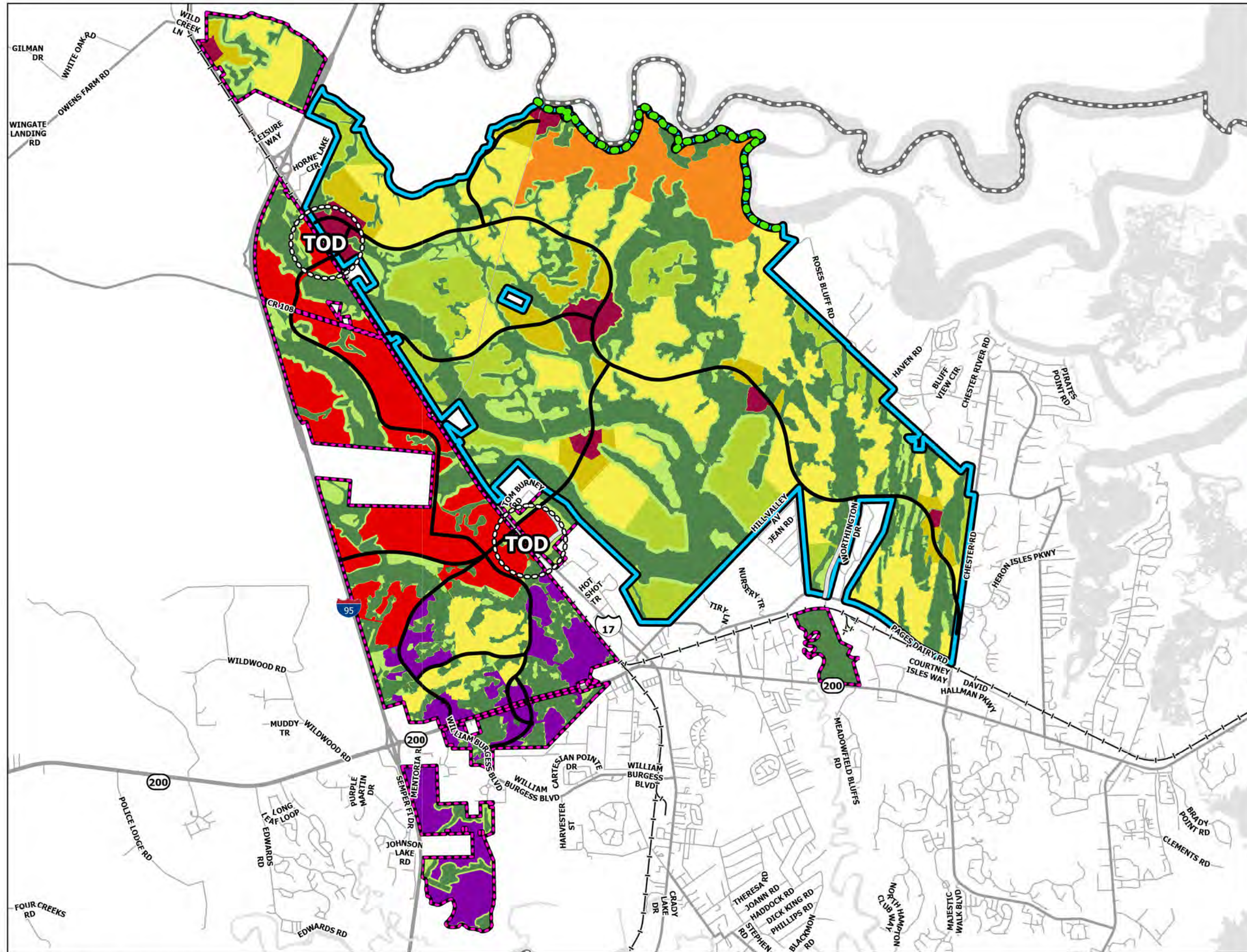
DSAP Master Land Use Plan
Adopted June 26th, 2023

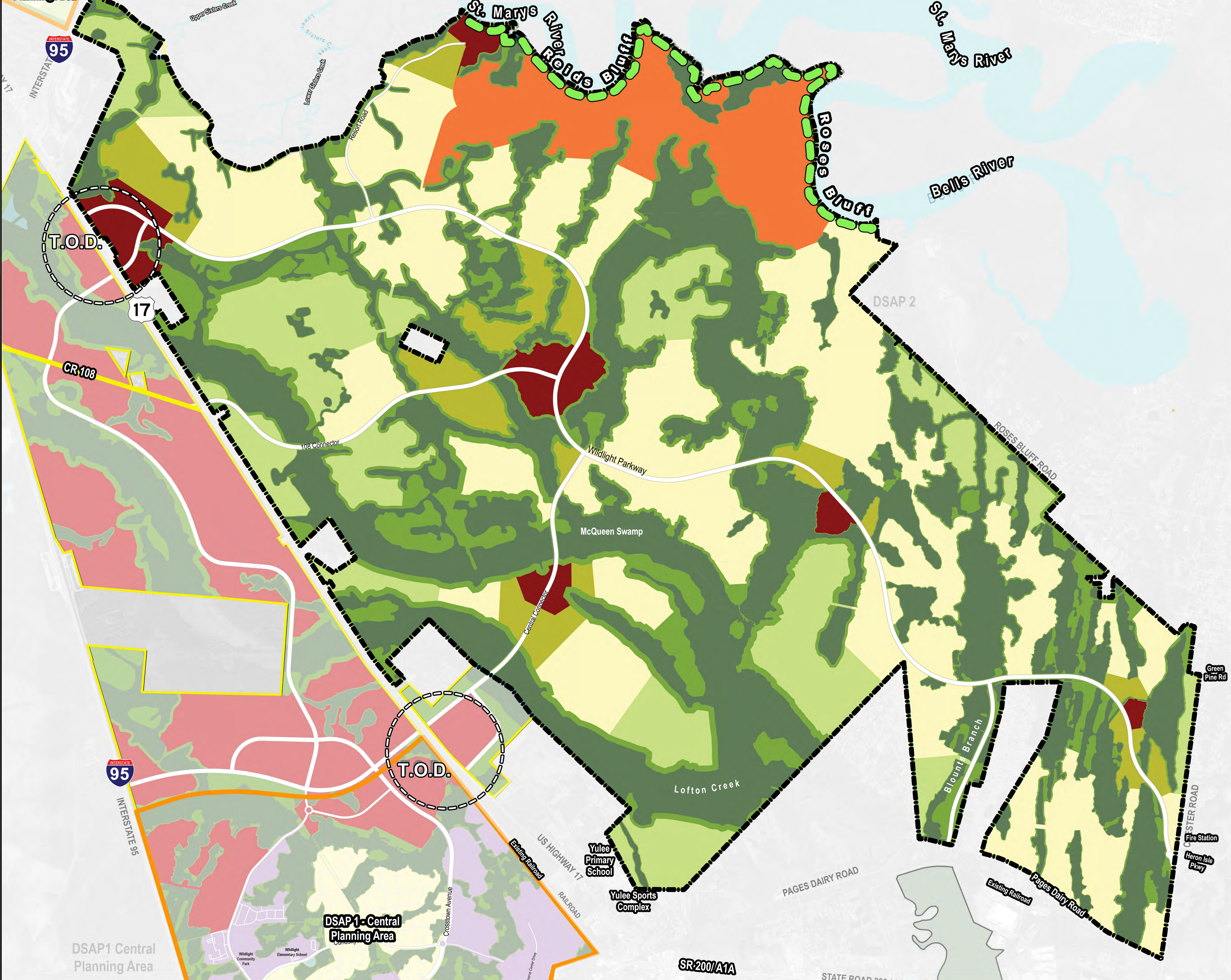
Source: ETM, Nassau County

- ENCPA Boundary
- DSAP #2 - Area
- Nassau County Boundary
- Hydrography
- ENCPA Proposed Roads**
 - Mobility Road
 - Internal Road
- Transit Oriented Development
- St. Marys River Greenway per Policy FL 13.09
- Proposed Land Use**
 - Employment Center
 - Regional Center
 - Resort Development
 - Tier 1 Residential
 - Tier 2 Residential
 - Tier 3 Residential
 - Village Center
- CHN**
 - Uplands
 - Wetlands



ETM England-Thims & Miller, Inc.
VISION • EXPERIENCE • RESULTS
14775 Old St. Augustine Road Jacksonville, FL 32258
904-642-8990 • Fax: 904-646-9485 • www.etm-inc.com





LEGEND

- Employment Center
- Regional Center
- Resort
- Village Center
- Tier 1 Residential
- Tier 2 Residential
- Tier 3 Residential
- Conservation Habitat Network (CHN) - Wetland
- Conservation Habitat Network (CHN) - Upland
- St. Marys Greenway

0' 1,000' 2,000'

Note: This land plan and/or rendering is conceptual and is subject to review, change and approval by several governmental agencies to meet environmental, technical and other standards. This plan was completed based on limited information, therefore all acreage figures are estimated and are subject to change.

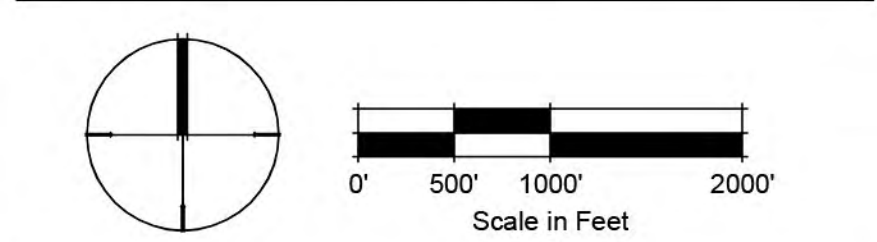
DSAP1 Central Planning Area

DSAP 1 - Central Planning Area

Yulee Primary School
 Yulee Sports Complex

RAYDIENT
 PLACES + PROPERTIES

ETM | Trusted Advisors, Creating Community.
 ENGLAND-THIMS & MILLER

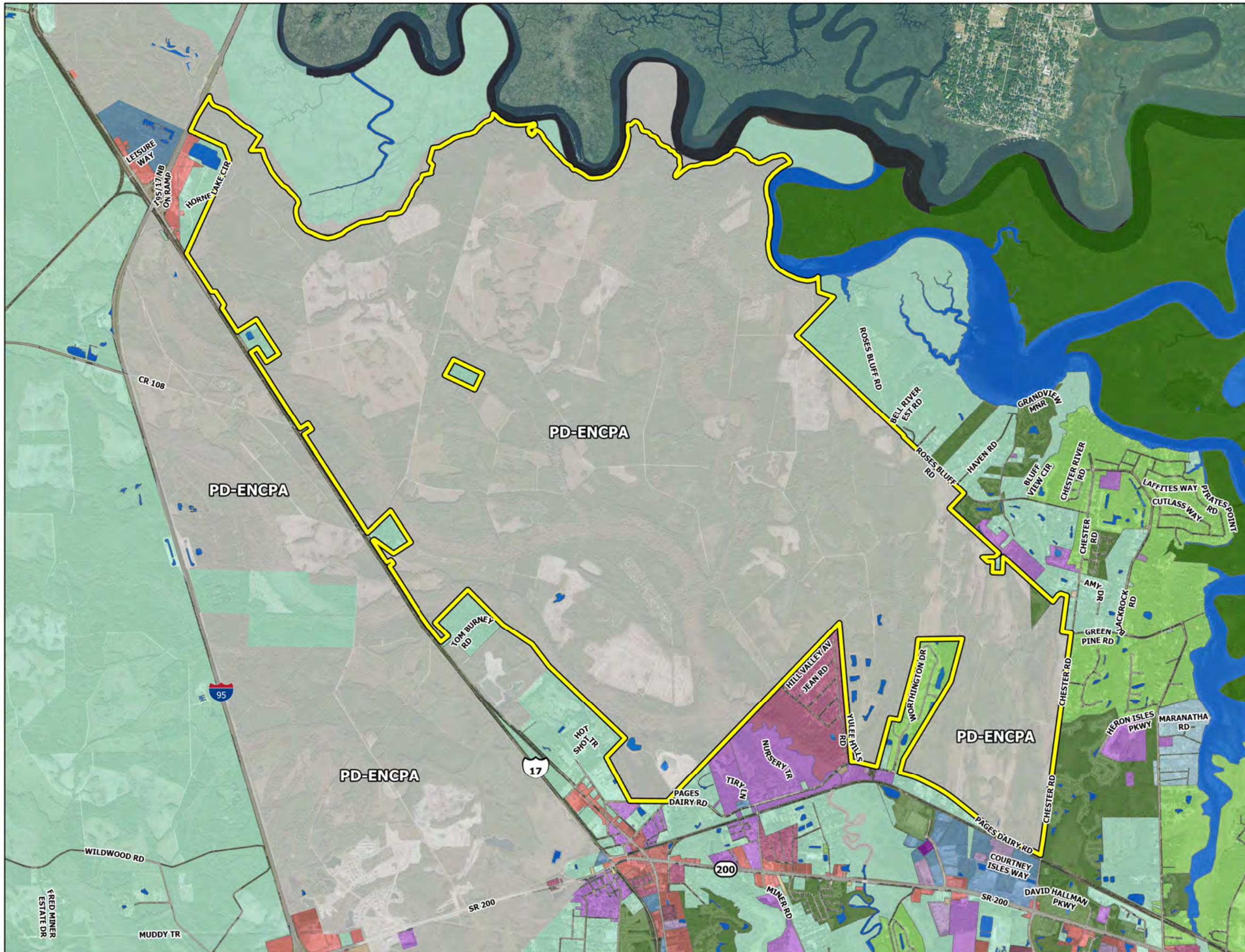
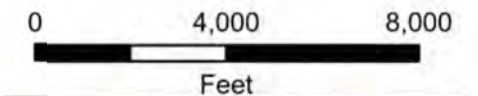


Wildlight - DSAP #2

Zoning

Source: ETM, Nassau County

- DSAP #2 - Area
- Zoning**
- COMMERCIAL GENERAL
- COMMERCIAL HIGHWAY TOURIST
- COMMERCIAL INTENSIVE
- COMMERCIAL NEIGHBORHOOD
- COMMERCIAL PROFESSIONAL OFFICE
- GOVERNMENT / PUBLIC USE
- INDUSTRIAL HEAVY
- INDUSTRIAL WAREHOUSE
- MARSH
- OPEN RURAL
- PD-ENCPA
- PLANNED UNIT DEVELOPMENT
- RESIDENTIAL GENERAL 1
- RESIDENTIAL GENERAL 2
- RESIDENTIAL MIXED
- RESIDENTIAL MOBILE HOME
- RESIDENTIAL SINGLE FAMILY 1
- RESIDENTIAL SINGLE FAMILY 2
- WATER

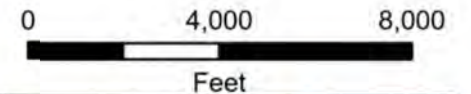
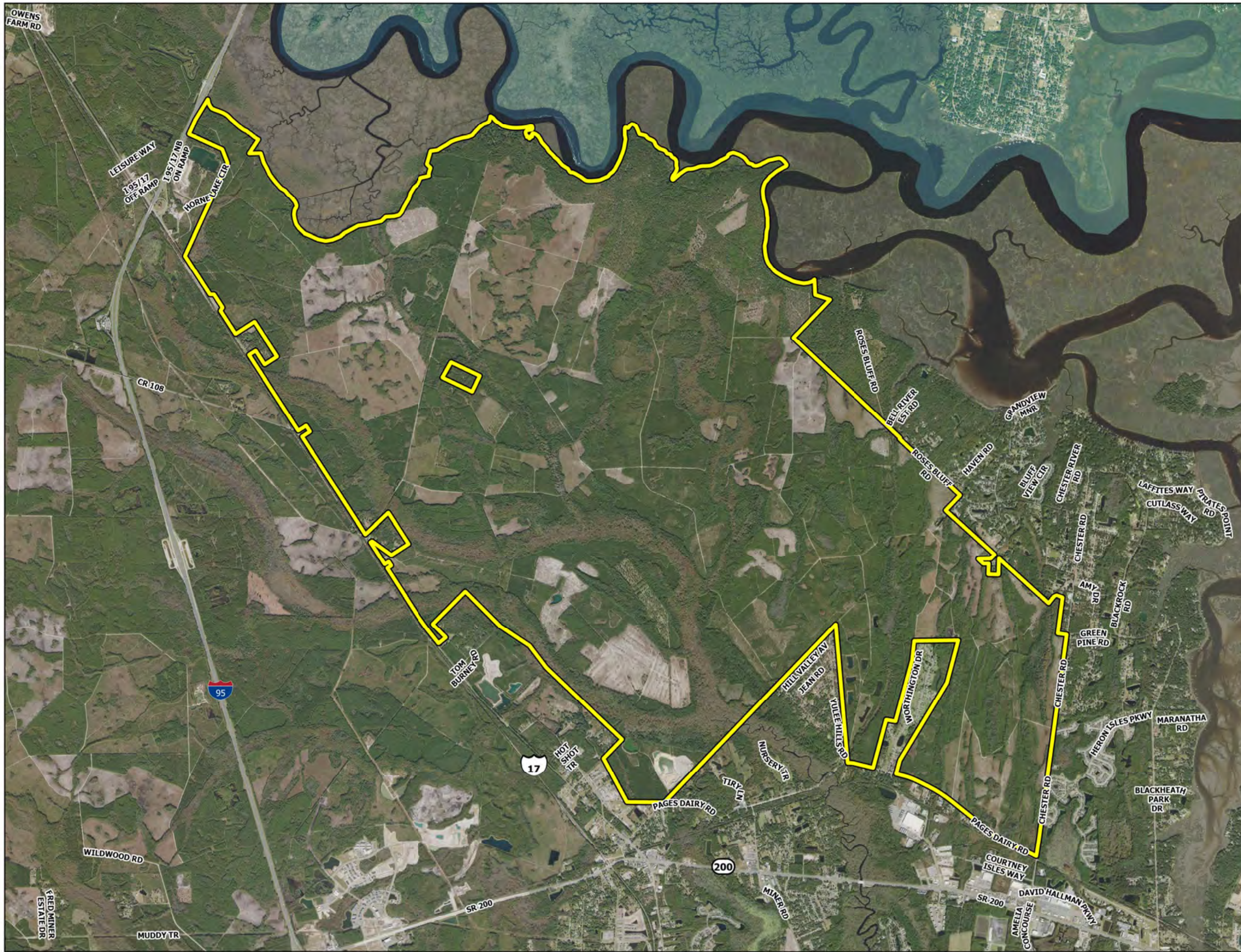


Wildlight - DSAP #2

Aerial

Source: ETM, Nassau County

DSAP #2 - Area



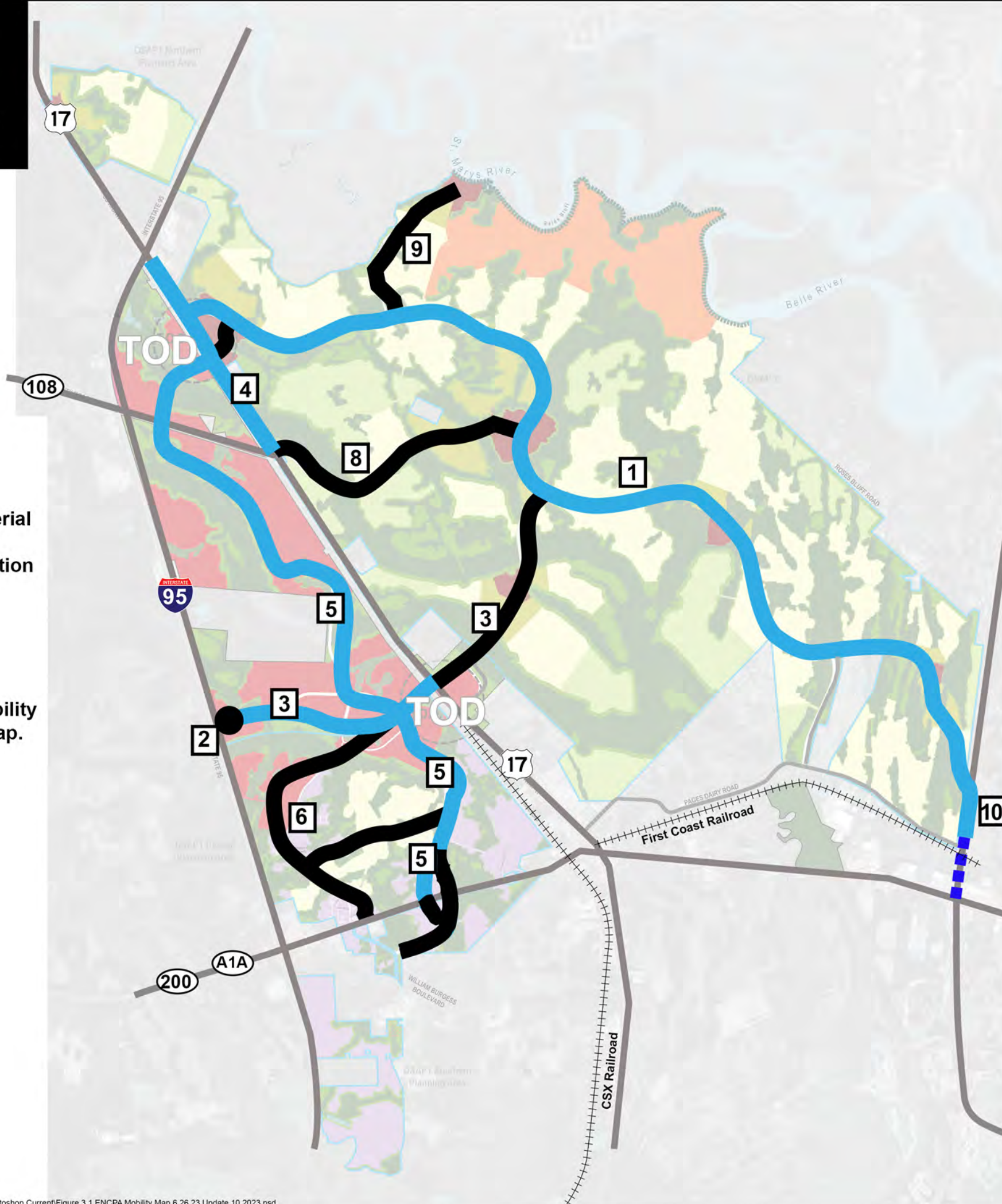
ETM England-Thim & Miller, Inc.
VISION • EXPERIENCE • RESULTS
14775 Old St. Augustine Road Jacksonville, FL 32258
904-642-8990 • Fax: 904-646-9485 • www.etm-inc.com

ENCPA Mobility Improvement Map

Mobility Network Cost Components (on map)

- 1 Wildlight Parkway
- 2 New I-95 Interchange
- 3 Central Connector
- 4 US 17 Widening
- 5 North-South Regional Center Arterial
- 6 DSAP Western Loop Collector
- 7 SR A1A at Blackrock Rd. intersection left turn lane improvements
- 8 CR 108 Connector
- 9 Resort Road
- 10 Chester Road

Internal trails are included in the Mobility Network but are not shown on the map.

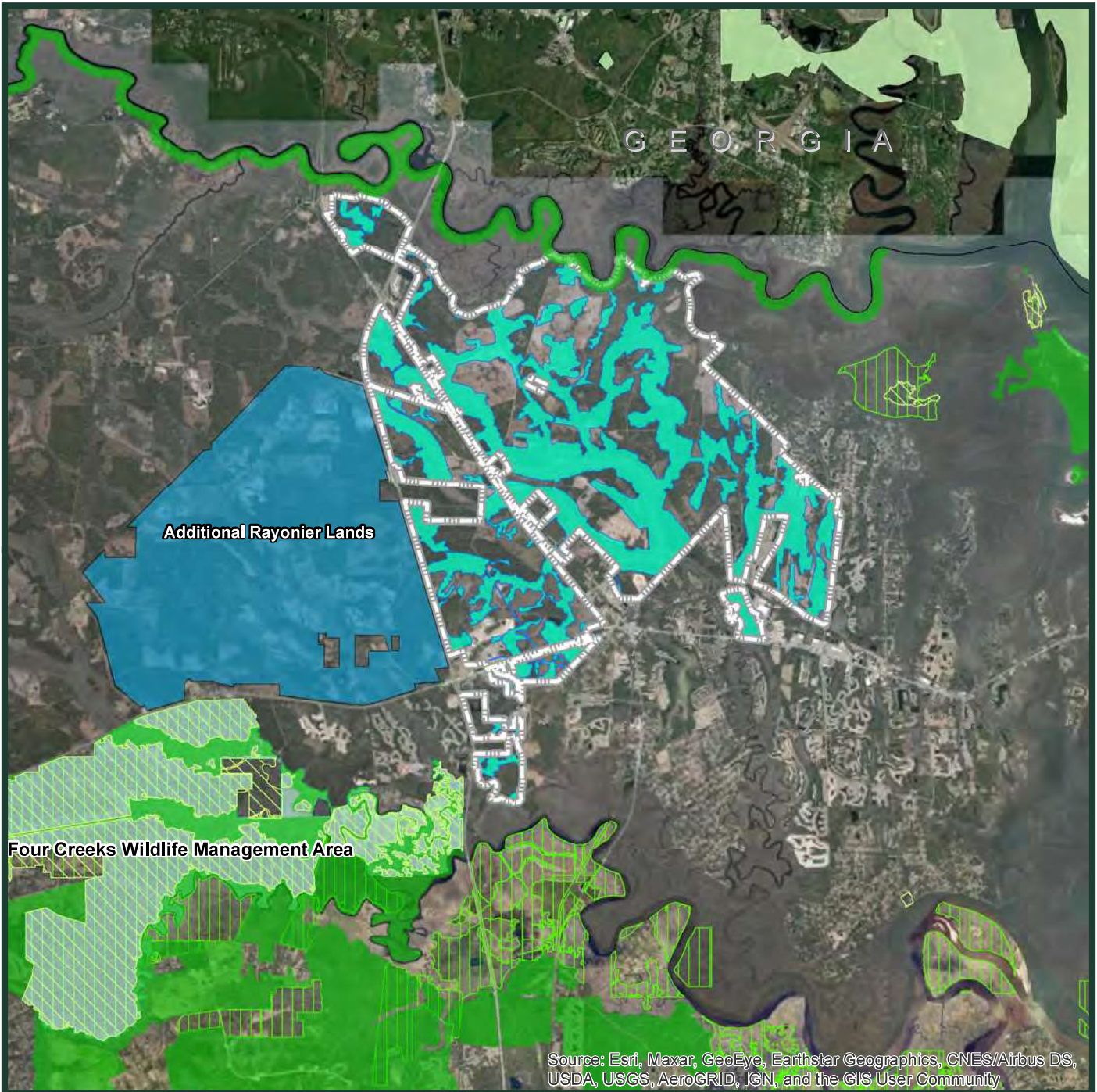


Improvements

- 4- Lanes
- 2-Lanes w/Turn Lanes at Major Intersections
- - - Committed Funding Roadway
- Interchange
- Left Turn Lane Improvements

Notes

1. All 4-lane roadways are assumed to be implemented in phases, with 2 lanes constructed initially.
2. The cross-sections for all the Mobility Network roadways also include 10' multi-use trails.
3. In addition to the roadways shown, the Mobility Network includes approximately 50 miles of separate multi-use trails.
4. Roadway shown in dashed lines have committed funding through Nassau County for additional lanes. This roadway is not included in the cost for the recommended mobility plan.
5. In addition to the roadways shown, the Mobility Network includes major intersections.



Source: Esri, Maxar, GeoEye, Earthstar Geographics, CNES/Airbus DS, USDA, USGS, AeroGRID, IGN, and the GIS User Community

Legend		
East Nassau Community Planning Area (ENCPA)	Florida Forever BOT & SOR Lands	
ENCPA Conservation Habitat Network (CHN)	Florida Managed Areas	
Wildlife Management Areas (WMA)	Georgia Conservation Lands (2011)	
Florida Forever Acquisition	Additional Rayonier Lands	

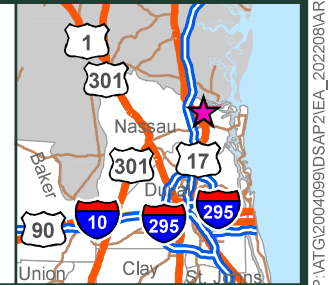
Source: ENCPA boundary received from Vanasse Hangen Brustlin, Inc.; 2010-09-28.

FIGURE A.2.1
REGIONAL LANDS IN THE VICINITY OF THE EAST NASSAU
COMMUNITY PLANNING AREA, NASSAU COUNTY, FLORIDA.

BDA BREEDLOVE, DENNIS & ASSOCIATES, INC.
 Environmental Consultants
 330 W. Canton Ave., Winter Park, FL 32789 • 407-677-1882



0 2,000 4,000
 Feet
 1 inch = 4,000 feet



Legend

- Project Boundary
- DEP Approved and Surveyed Wetland Limits (2,663.19 ac)
- SJRWMD Approved Wetland Limits (99.38 ac)
- Photo-interpreted (2,565.93 ac)

Source: Breedlove, Dennis & Associates, Inc. and other various sources.

FIGURE A.3.1

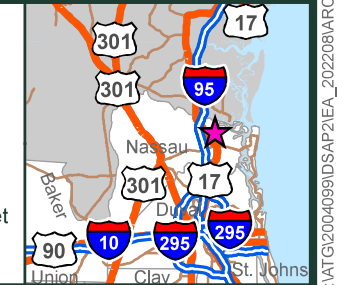
WETLANDS AND SURFACE WATERS ON THE EAST NASSAU COMMUNITY PLANNING AREA DSAP 2 PROJECT AREA, NASSAU COUNTY, FLORIDA.

Source: Esri, Maxar, GeoEye, Earthstar Geographics, CNES/Airbus DS, USDA, USGS, AeroGRID, IGN, and the GIS User Community, Esri, HERE, Garmin, (c) OpenStreetMap contributors, and the GIS user community

CBT - 9/6/2022 - P:\AT\202004099\DSAP2\EA_202208\ARC\GIS\Wetlands.mxd



0 2,000 4,000
 Feet
 1 inch = 4,000 feet



Legend

- Project Boundary
- 617 - Mixed Wetland Hardwoods
- 213 - Woodland Pastures
- 330 - Mixed Rangeland
- 411 - Pine Flatwoods
- 412 - Longleaf Pine - Xeric Oak
- 420 - Upland Hardwood Forests
- 427 - Live Oak
- 434 - Hardwood - Coniferous Mixed
- 441 - Coniferous Plantations
- 441YP - Coniferous Plantations (Young Pine)
- 443 - Forest Regeneration Area
- 510 - Streams and Waterways
- 516 - Ditches and Streams
- 530 - Reservoirs
- 611 - Bay Swamps
- 620 - Wetland Coniferous Forests
- 621 - Cypress
- 625 - Hydric Pine Flatwoods
- 630 - Wetland Forested Mixed
- 630L - Wetland Forested Mixed (Logged)
- 641 - Freshwater Marshes
- 642 - Saltwater Marshes
- 643 - Wet Prairies
- 644 - Emergent Aquatic Vegetation
- 646 - Treeless Hydric Savanna
- 740 - Disturbed Land
- 814 - Dirt Roads
- 830 - Utilities
- W441 - Wet Coniferous Plantations
- W814 - Dirt Road in Wetland

Source: Breedlove, Dennis & Associates, Inc.

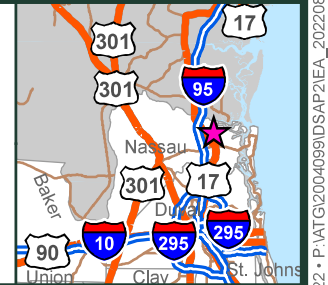
FIGURE A.5.1
FLORIDA LAND USE, COVER AND FORMS CLASSIFICATION SYSTEM (FLUCFCS) MAP OF THE EAST NASSAU COMMUNITY PLANNING AREA DSAP 2 PROJECT AREA, NASSAU COUNTY, FLORIDA.

Source: Esri, Maxar, GeoEye, Earthstar Geographics, CNES/Airbus DS, USDA, USGS, AeroGRID, IGN, and the GIS User Community

C:\T\8253\2022 - P\AT\G\2004099\USAP2\IEA_202208\ARC\GIS\FLUCFCS.mxd



0 2,000 4,000
 Feet
 1 inch = 4,000 feet



Legend

- Project Boundary
- NRCS Soils**
- 2 - Arenets, nearly level
- 6 - Hurricane-Potsburg fine sands, 0 to 5 percent slopes
- 7 - Kingsland mucky peat, frequently flooded
- 8 - Kureb fine sand, 0 to 5 percent slopes
- 9 - Leon fine sand
- 10 - Mandarin fine sand, 0 to 2 percent slopes
- 11 - Chaires fine sand
- 13 - Goldhead fine sand
- 14 - Rutlege mucky fine sand, frequently flooded
- 15 - Buccaneer clay, frequently flooded
- 16 - Ellabelle mucky fine sand, frequently flooded
- 18 - Lynn Haven-Wesconnett-Leon complex, depressional
- 20 - Ortega fine sand, 0 to 5 percent slopes
- 21 - Blanton fine sand, 0 to 5 percent slopes
- 22 - Sapelo-Leon fine sand
- 24 - Kingsferry fine sand
- 25 - Maurepas muck, frequently flooded
- 26 - Centenary fine sand, 0 to 5 percent slopes
- 27 - Ridgewood fine sand, 0 to 5 percent slopes
- 28 - Tisonia mucky peat, tidal
- 29 - Resota fine sand, 0 to 5 percent slopes
- 30 - Kureb-Resota fine sands, rolling
- 31 - Kershaw fine sand, 2 to 8 percent slopes
- 33 - Goldhead-Meadowbrook fine sands, depressional
- 34 - Croatan muck, frequently flooded
- 39 - Evergreen-Leon mucks, depressional
- 51 - Albany fine sand, 0 to 5 percent slopes
- 99 - Water

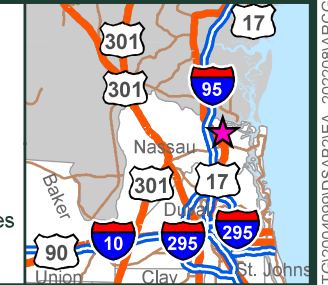
Source: U.S. Department of Agriculture, Natural Resources Conservation Service, Soil Survey Geographic (SSURGO) database.

FIGURE A.7.1
NATURAL RESOURCES CONSERVATION SERVICE (NRCS) SOILS MAP OF THE EAST NASSAU COMMUNITY PLANNING AREA DSAP 2 PROJECT AREA, NASSAU COUNTY, FLORIDA.

Source: Esri, Maxar, GeoEye, Earthstar Geographics, CNES/Airbus DS, USDA, USGS, AeroGRID, IGN, and the GIS User Community



0 1.5 3 Miles
 1 inch = 15,840 feet



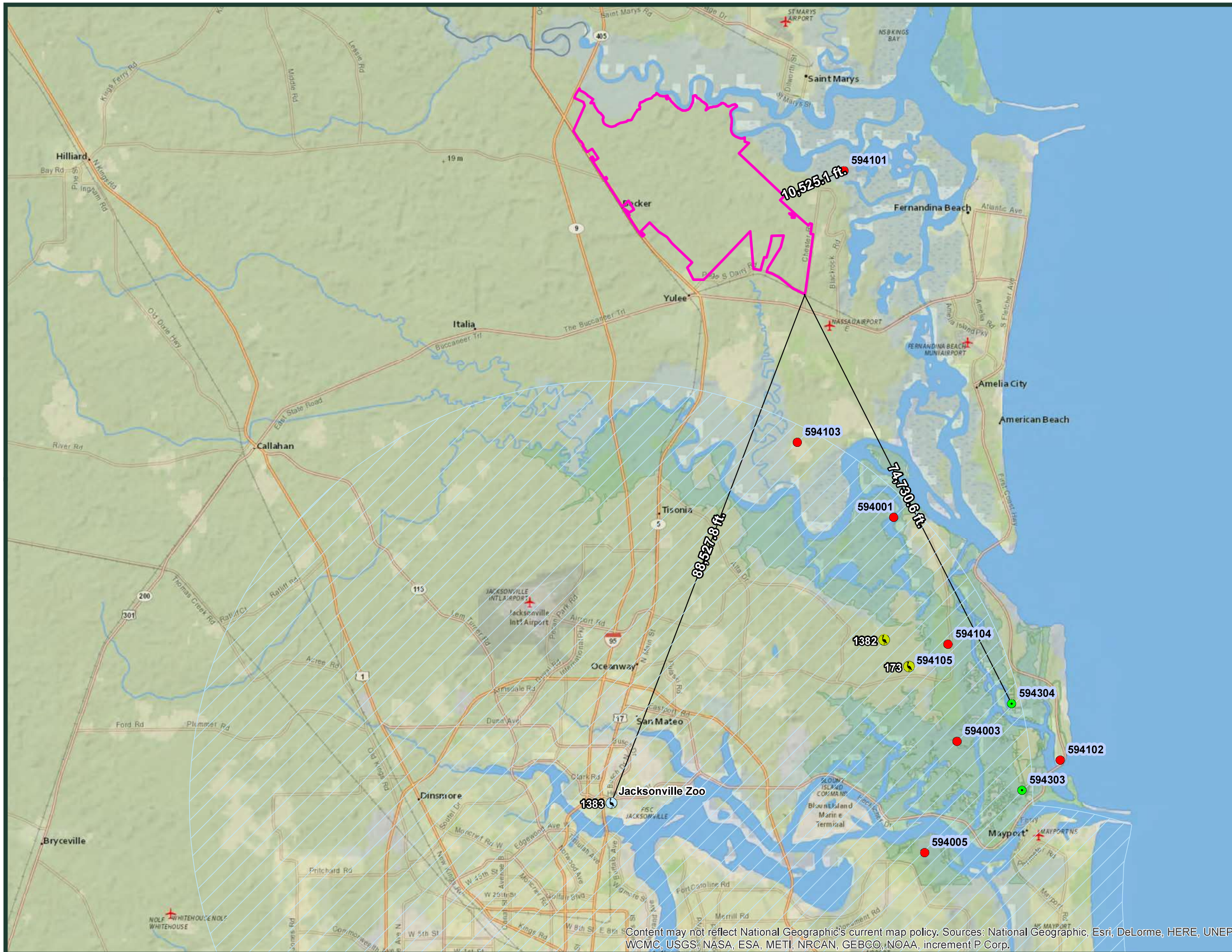
Legend

- Project Boundary
- ⊙ Wood Stork Colonies (2019)
- ⊙ Wading Bird Colonies (2019)
- Wood Stork Foraging Areas (2019)
- Wading Bird Rookeries (1999)**
- Active
- Inactive
- ▲ Not checked

Source: Florida Fish and Wildlife Conservation Commission (FWC).

FIGURE A.10.1

WADING BIRD COLONIES IN THE VICINITY OF THE EAST NASSAU COMMUNITY PLANNING AREA DSAP 2 PROJECT AREA, NASSAU COUNTY, FLORIDA.





Content may not reflect National Geographic's current map policy. Sources: National Geographic, Esri, DeLorme, HERE, UNEP-WCMC, USGS, NASA, ESA, METI, NRCAN, GEBCO, NOAA, increment P Corp.

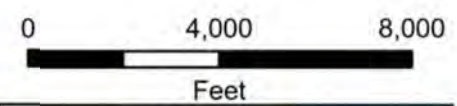
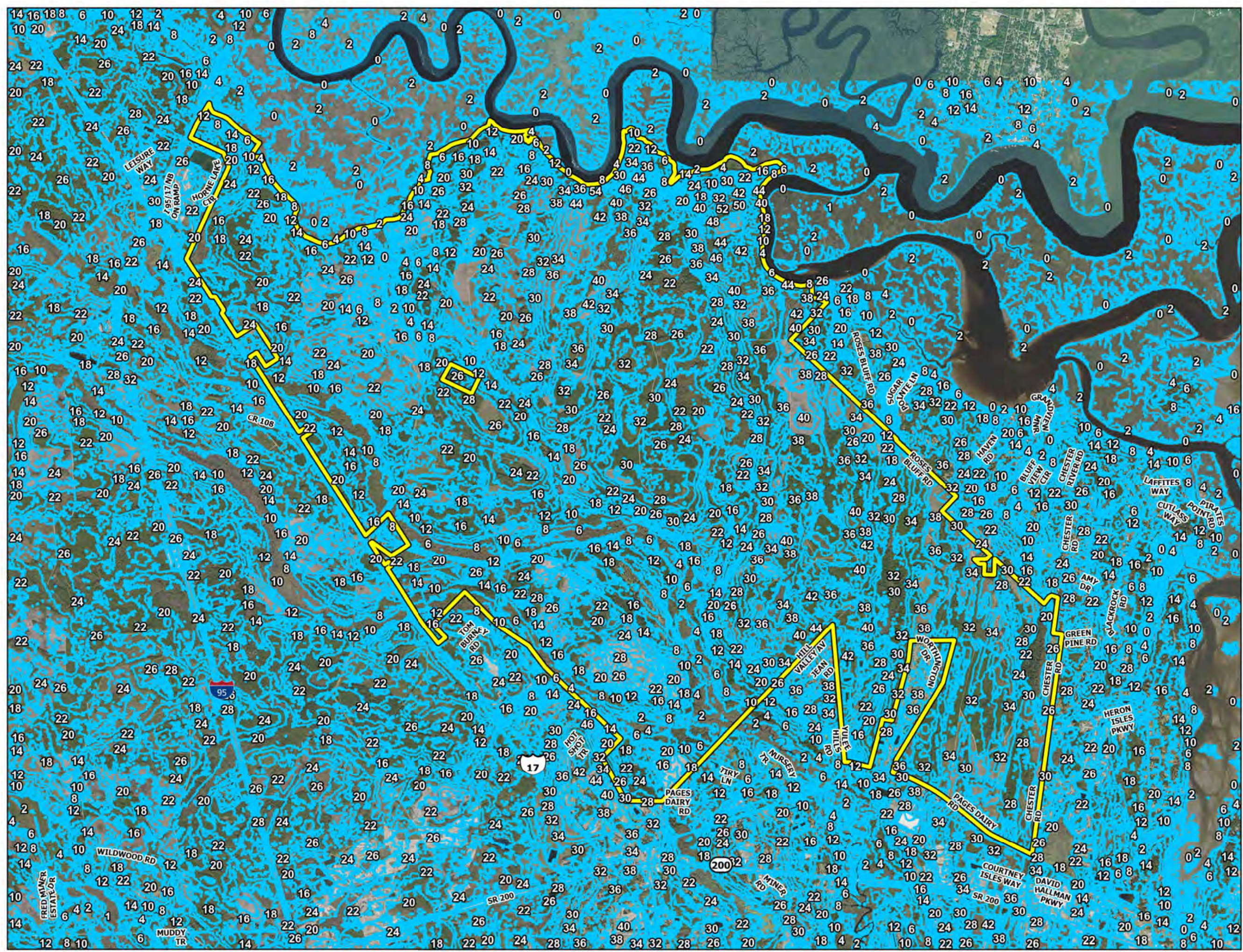
CBT - 8/23/2022 - P:\ATG\2024099\DSAP2\EA_202208\ARC\GIS\WadingBirds.mxd

Wildlight - DSAP #2

Topography

Source: ETM, Nassau County

-  DSAP #2 - Area
-  1ft Contours



ETM England-Thimys & Miller, Inc.
VISION • EXPERIENCE • RESULTS
14775 Old St. Augustine Road Jacksonville, FL 32258
904-642-8990 • Fax: 904-646-9485 • www.etm-inc.com

Date: 10/23/2023

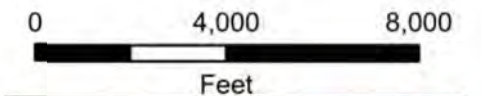
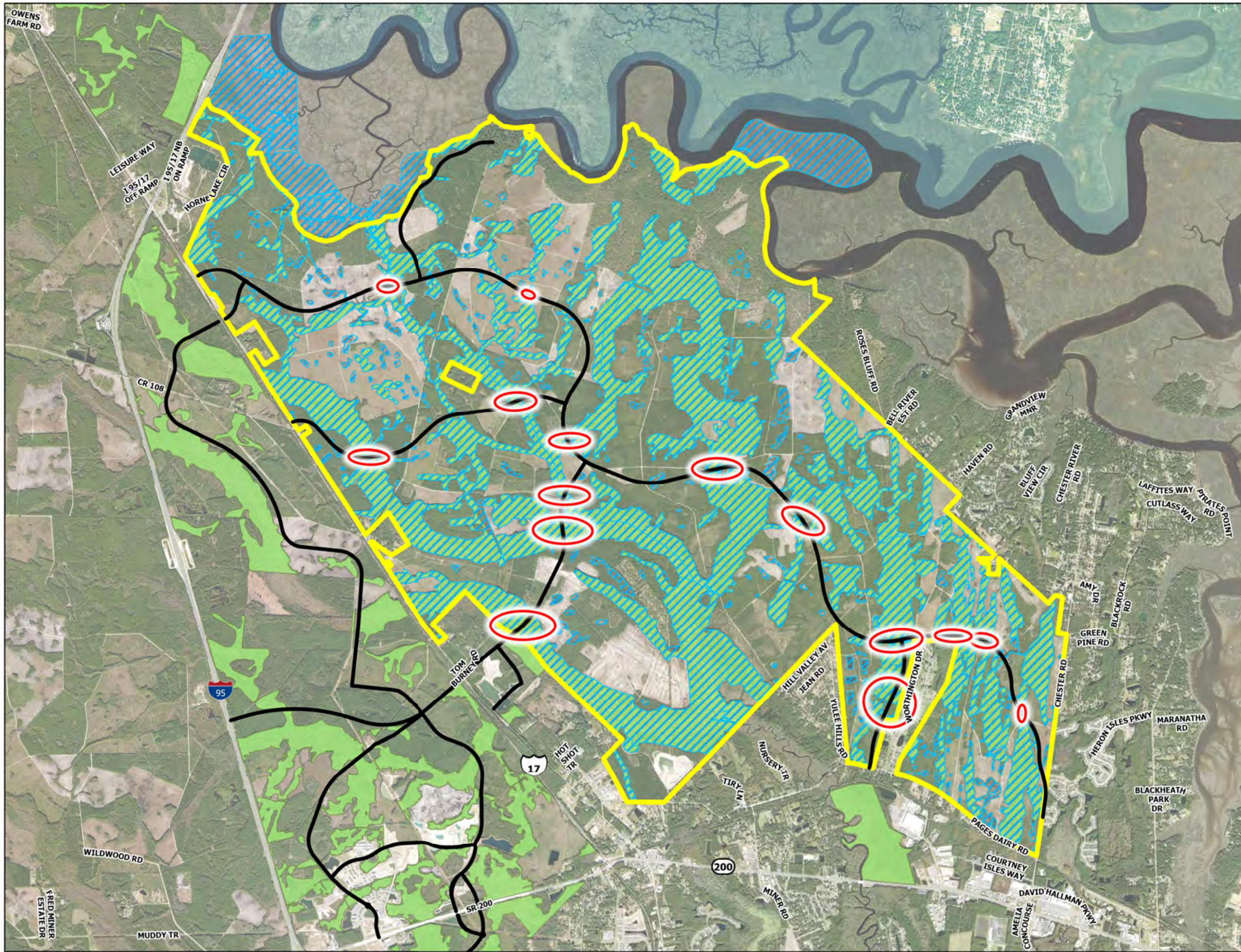
Wildlight - DSAP #2

Wildlife Crossings

Source: ETM, Nassau County, BDA

- ▬ DSAP #2 - Area
- ▬ Conservation Habitat Network (CHN)
- ▨ Wetlands and Surface Waters
- ▬ Wildlife Crossing Areas
- ▬ ENCPA Proposed Mobility Roads

*The final location and type of roadway crossing for wildlife corridors within the CHN is subject to permitting, engineering and the DSAP DO



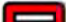








ETM England-Thims & Miller, Inc.
 VISION • EXPERIENCE • RESULTS
 14775 Old St. Augustine Road Jacksonville, FL 32258
 904-642-8990 • Fax: 904-646-9485 • www.etm-inc.com

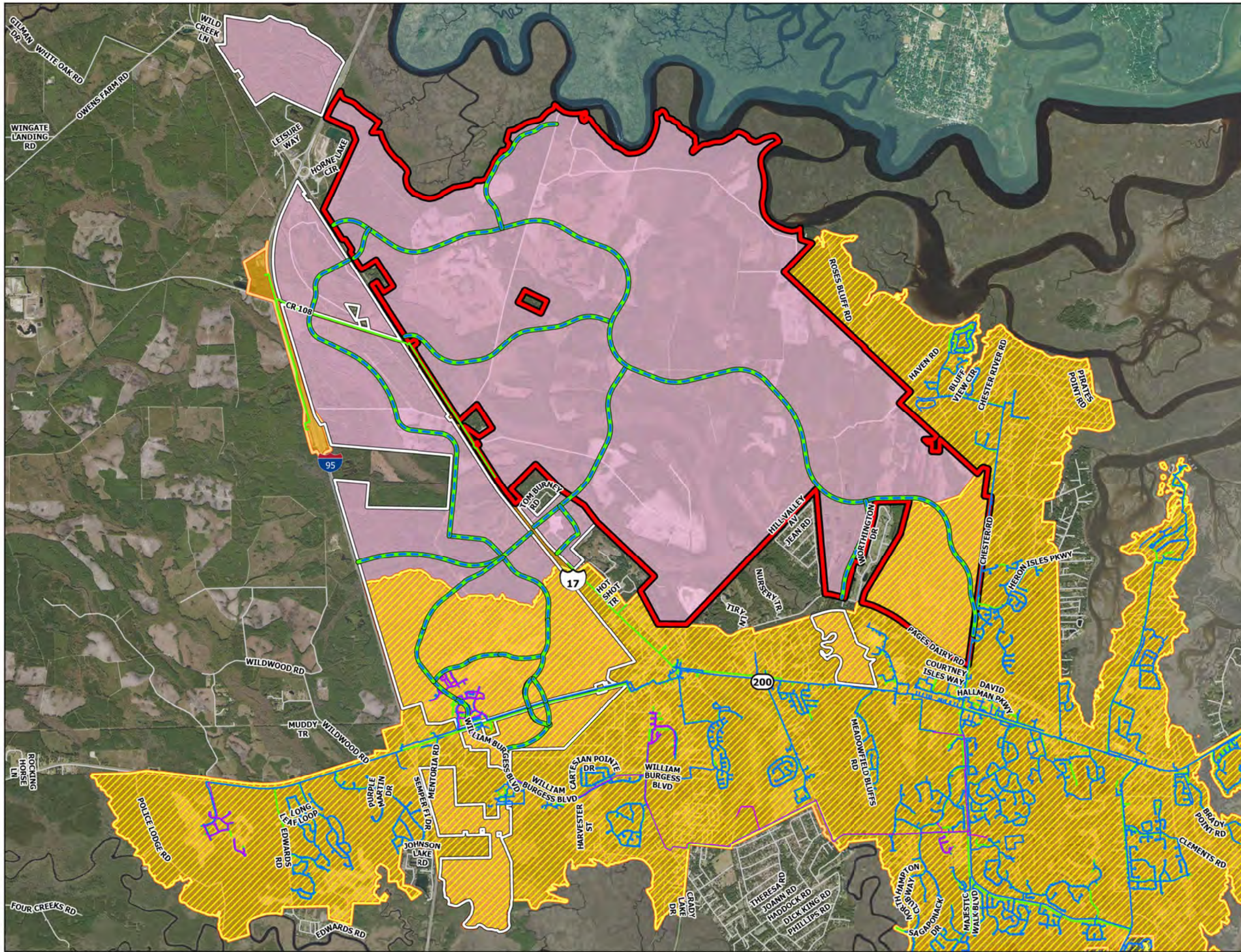
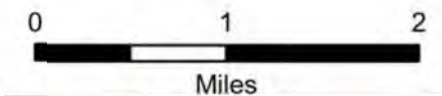
Date 10/23/2023

Wildlight - DSAP #2

JEA Service Areas

Source: ETM, Nassau County, JEA

-  DSAP #2 - Area
-  ENCPA Boundary
-  JEA Sewer Service Area
-  JEA Water Service Area
-  Proposed Future Service Area
-  Proposed ENCPA Water/Sewer
-  Existing JEA Sewer
-  Existing JEA Water
-  Existing JEA Reuse

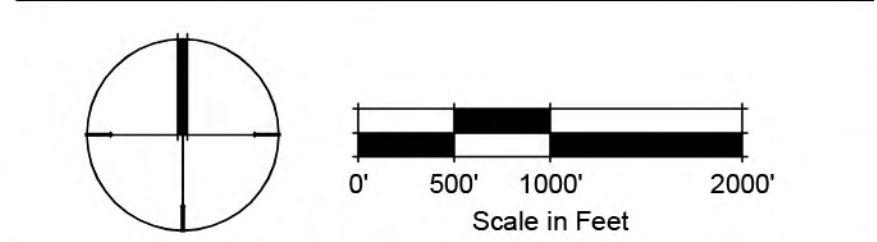




LEGEND

- Primary Mobility Trail Network
- Green Ribbon Overlay
- Designated East Coast Greenway Alignment
- St. Marys Greenway per Policy FL 13.09
- Trail Head
- Potential Pedestrian Bridge
- Potential Non-Mobility Network Connections*

* Potential Non-Mobility Network Connections are conceptual and subject to permitting. Final locations will be determined during site engineering.



Note: This land plan and/or rendering is conceptual and is subject to review, change and approval by several governmental agencies to meet environmental, technical and other standards. The plan was compiled based on limited information. Therefore all acreage figures are estimated and are subject to change.